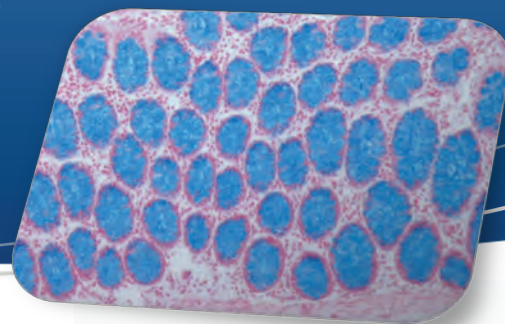


Tissue Paper

December 2012 – Volume 33



Histotechnology Group of Queensland



From the President – Tony Reilly

2013 has really flown by and here we are now heading into the festive season. It has been another prosperous year for the HGQ. The state conference was a roaring success and all feedback received both locally and interstate has been extremely positive. I personally feel without bias that it was one of the most balanced programs I have seen at a conference for many years. We also conducted a number of successful and well attended scientific meetings and this is an area for next year that the committee will be focusing on in the near future, as we will not be conducting a state conference next year due to the national conference in Melbourne. Of course the final scientific meeting of the year will be in conjunction with the AGM and Christmas party at the Kedron-Wavell RSL. I hope as many members as possible will get along to this final event.

This was also the inaugural year for the HGQ QUT Histology award for the student with the best Histology practical achievements. This was well received by QUT and I see it as something that will continue well in to the future. Unfortunately QUT were not forthcoming with the photographs of the evening.

I would like to take this final opportunity to thank the committee for their tireless work during the year. Without them none of the above mentioned would have been possible, nor as successful as they all were.

Inside this issue....

- Page 1 From the President – Tony Reilly
- Page 4 Secretarial Report – Jerres Alcober & Editor's Note – Emma Hughes
- Page 7 Gold Coast 2012 – Histology of Freelance Journalism
- Page 11 The effects of delays in embedding tissue after processing
- Page 16 2nd Scientific Meeting – Hosted by Pathology QLD - RBH Lab

Newsletter Design by Jerres Alcober



“Bridging histology laboratories since 1982”

Publication Guidelines

Material in this Newsletter may be copied for personal use only and not for commercial gain. Both the Author and permission to copy must be acknowledged. No responsibility is assumed by the Histotechnology Group of Queensland Incorporated or the Editorial Committee for any injury and/or damage to persons or property as a matter of product liability, negligence or otherwise, or form from any use or operation of any methods, products, instructions, ideas contained in this newsletter. It is the user's responsibility to ensure that all procedures are carried out in accordance with all relevant Health and Safety requirements. Any opinions expressed are those of the contributors and are not necessarily those of The Histotechnology Group of Queensland or the Editorial Committee.

Newsletter Correspondence

Emma Hughes

Histopathology Department – Sullivan Nicolaides Pathology

134 Whitmore Street, Taringa, QLD 4068

emma_hughes@snp.com.au (07) 3377-8594

Guidelines to Contributors

Please forward submissions in Microsoft Word or compatible program either via email and/or CD & DVD. For any attached photos, please also include these in a separate file. Include your name and address if required. Submissions can be in the form of a brief note, letter or as a complete article.

Advertisement Rates

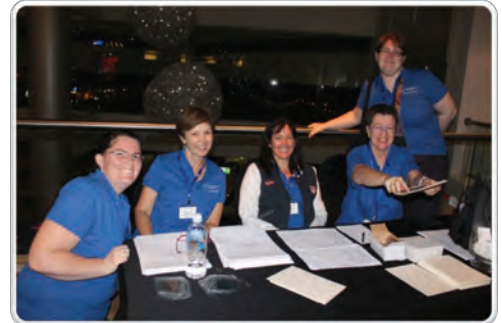
Single A4 page - \$50 Double-sided A4 page - \$100

Please provide a copy of advertisement(s) in digital formats only.

All monies payable to:

HISTOTECHNOLOGY GROUP OF QUEENSLAND INCORPORATED

ABN: 81 375 702 241 (GST exempt)



Website - www.hgq.org.au

- Update member details
- Pay annual subscriptions safely via PayPal
- Target the right audience by advertising on our website.
- Competitive advertisement packages are available.

Email - admin@hgq.org.au

**Members**

Sue Bell – RBH

Helen O'Connor – QUT

Lloyd Blundell – Trade

David Gan – QML

Executive Committee 2012

President

Tony Reilly – PAH

Treasurer

Steve Riley – PAH

Secretary

Jerres Alcober – TPCCH

Editors

Emma Hughes – SNP

Anthony Van Zwieten – TPCCH

Members

Mohammed Amigh – DEEDI

Dale Hyam – FSS

Amanda Russell – RBH

Vivienne Treagus - Healthscope



MILESTONE
H E L P I N G
P A T I E N T S



MILESTONE LOGOS

The LOGOS is the first all-in-one tissue processor with exclusive Milestone patented microwave hybrid processing technology. Addressing the needs of “lean” labs for a flexible tissue processor, LOGOS is highly adaptable to customise workflow streams.

LOGOS

The first all-in-one hybrid tissue processor

- Conventional
- Rapid, fully automated single retort
- Rapid, simultaneous dual retort

The ideal tool for the ‘lean’ lab



For more information please contact Abacus ALS:

AUS 1800 222 287 NZ 0800 222 170
info@abacus-als.com | www.abacus-als.com



Histotechnology Group of Queensland



Secretarial Report – Jerres Alcober



Hello to all our readers. As the year draws to an end, the HGQ have been active in providing numerous educational & social prospects for 2012 members.

Since the State conference in May, we have had our 2nd scientific meeting of 2012. This meeting was hosted by the Pathology Queensland's RBWH laboratory in late August. Guests were treated to a tour of the laboratory as well as the University of Queensland's Integrated Pathology Learning Centre. Thank you to the guests, staff & Pathology Queensland that made the event successful.

The social event in early October saw members make a trip down to Merthyr Bowls Club. It was a perfect afternoon for barefoot bowls & catching up with other members in the industry. Don't be surprised if lawn bowls finds its way back into the social calendar for 2013.

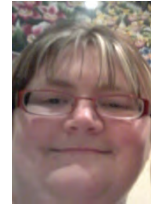
The AGM & 3rd scientific meeting are the last events left on the 2012 HGQ calendar. The Prince Charles Hospital Laboratory – Pathology Queensland, have a great itinerary lined up for members & guests which also includes presentations, dinner & a trivia night with various prizes up for grabs. Please log on to www.hgq.org.au for more information & to stay updated.

For any readers wanting to become a HGQ member, here is a little bit of information. HGQ membership covers the calendar year: 1st January – 31st December. Full & Student memberships are available. Being a member includes "Tissue Paper" subscriptions; website access; social event discounts; eligibility to vote; beverages & dinner covered at AGM.

I would like to take this opportunity once again to thank everyone for reading & contributing to the "Tissue Paper". If you'd like to be involved in the "Tissue Paper" please contact us. The more the merrier.

Have a safe & fantastic festive season. Enjoy!!

Editor's Note – Emma Hughes



Hello Everyone. Welcome to another edition of the Tissue Paper, the final for this year. I hope you enjoy this, my first edition. I would like to thank and congratulate Anthony Van Zwieten for his excellent work as editor of this paper for the last couple of years.

I would first like to give you a little information about me. My name is Emma Hughes and I have been working as a Laboratory Technician at Sullivan Nicolaides Pathology since 2003. I have been on the HGQ committee for the last two years and was involved in organising the fantastic HGQ conference that was held on the Gold Coast in May.

In this issue there is a fantastic article written by Andre Heiser on the Conference, the results of an experiment I conducted as requested by Mohammed Amigh. There is also an article about the Scientific Meeting hosted by the Royal Brisbane Hospital Queensland Health Histopathology Department and about the very interesting Integrated Pathology Learning Centre which is run the University of Queensland's School of Biomedical Sciences.

We are pleased to announce that the first annual prize for the Best Score for Practical Histology Skills at The Queensland University of Technology sponsored by the Histotechnology Group of Queensland was awarded to Ashleigh Zaeza.

The final Scientific Meeting for this year and the Annual General Meeting for the Histotechnology Group of Queensland is on December 7th at the Kedron Wavell Services Club from 6:30pm.

The night will include the AGM, the 3rd Scientific Meeting for the year hosted by the Prince Charles Hospital, the dinner (free for all members) and a trivia night.

I am always looking for articles for inclusion in this publication, please forward me any articles or suggestions for articles you wish to see included in the next issue.

That is it from me. I would like to wish all our members a very merry Christmas and a happy new year and hope to see you again in early March with the next issue.

HISTOLOGY EMBEDDING CENTRE

This embedding centre is a modular tissue embedding system consisting of two components - a cold plate and a heated embedding module. The system has a large working platform with automatic recycling of wax residue. The temperature range of the paraffin reservoir, working surfaces and warming trays is between ambient and 99°C. The cold plate module can be adjusted from ambient to -30°C.

The tissue embedding cassettes and base mould trays can be set to different temperatures. The large working surface allows processing many samples at the same time. The cooling system operates with an environmentally safe refrigerant and a very quiet compressor. This high-performance modular system is ergonomically designed, and comes with all the advanced features necessary to perform fast and high quality embedding. The foot pedal allows the precise control of paraffin flow. The instrument has a hot forceps rack and safety features to eliminate overheating.



AUTOMATED SLIDE STAINER, WITH PLASMA DECONTAMINATOR, COMPUTERISED

This computerised automated slide stainer can store up to six frequently used programs which can be accessed via the LCD display. UM-SS700 remembers which containers are in use and does not use the incorrect containers. This unit can also move two baskets simultaneously.

The unit has a purification and decontamination system. The ion plasma cleaner uses ionised gas to chemically decompose harmful gases, such as hydrocarbons, including xylene and other common reagents. Plasma cleaning is maintenance-free and completely removes harmful substances. Plasma decontamination is superior to the use of activated charcoal filters.

AUTOMATED TISSUE PROCESSOR

This 12-phase tissue processor combines proven technology and a modern, functionally enhanced design. It allows for 12 treatment phases, and comes with 9 x 1200mL glass jars, and 3 x 1000mL paraffin jars. The temperature is adjustable from 45 to 85°C. Net weight of this tissue processor is 60kg.



CRYOSTAT, WITH UV STERILISER & INDIVIDUAL TEMPERATURE CONTROLS

This freezing microtome is designed for the optimal production of cryo-sections from most animal and plant tissues. Most frequent use is by pathology laboratories, but also many research facilities require a cryostat.

This automated cryostat has a UV source which is used to sterilise the instrument and specimen off-cuts. Another special feature is the capability to operate different parts of the instrument at varying temperatures. This facilitates sectioning and especially reduces ice crystal condensation on specimen and knife by using a lower temperature on surrounding parts.

PARAFFIN DISPENSER

Melts and dispenses paraffin. These paraffin dispensers have high heating performance and provide precise temperature regulation. The material is dispensed through the heated dispenser nozzles.

Key features of this paraffin dispenser include a 12 litre capacity with a constantly heated paraffin dispenser nozzle. The paraffin temperature can be electronically set from ambient to 70°C. This unit is equipped with an additional overheat prevention.



PARAFFIN SECTION WATER BATH & TISSUE FLOTATION WORKSTATION

This histology tissue flotation bath & slide dryer is an innovative and effective workstation for floating/flattening tissue sections. The workstation facilitates mounting of sections, coverslipping and rapid drying of slides.

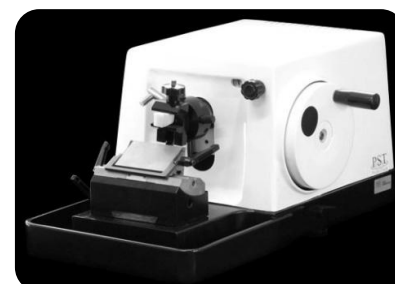


MANUAL, SEMI-AUTOMATED & AUTOMATIC ROTARY MICROTOMES

We offer a choice of four microtomes. All of these are adaptations of the proven design of a manual microtome. The durable and reliable mechanism has been motorised and is microprocessor controlled, offering ultimate versatility, efficient operation and convenience.

The manual microtomes have been designed for effortless manual sectioning using counter-balanced, exceptionally smooth-running hand-wheels. Storage space on top of the instrument housing provides room for sectioning tools and accessories. This microtome features a low-maintenance micrometre feed system. The vertical cross-roller guides are backlash and maintenance free.

The semi-automatic rotary microtomes are designed for routine and research applications in histology, histopathology and industrial quality assurance laboratories. Manual sectioning is enhanced by the high-precision motorised specimen feed, which results in efficient operation with maximum section reproducibility. It can cut soft paraffin as well as harder specimens, as long as they are suitable for being cut manually. A precision step motor is used for convenient and accurate specimen advance so that the section thickness remains consistent at any setting.



Features of the automatic microtome:

- Advanced actuation system, resulting in more precise sectioning and quiet operation
- LCD display shows section and trim thickness as well as a section counter
- A retraction mechanism during the arm's upstroke avoids collection of debris and damage to section, and prolongs the useful life of blades
- For safety the hand wheel may be locked in any position
- Waste receptacle containing debris is easily dismantled and cleaned
- Microtome has a safety alarm

Recent additions: Round waterbath, cassette labeller, stepping motors measuring-microscope, medical swaps, sampling/clean-room swaps, silicone instrument tray pin mats, microscope cameras, dewar flasks, centrifuges, tungsten carbide blades, VITLAB® micropipette, cryo-SEM preparation system, easiGlow™ glow discharge unit

Gold Coast 2012: The Histology of Freelance Journalism

André (with an A) Heiser; QML Buderim

Sofitel was quite a nice place. They gave me a double bed, a fancy bathroom and several hundred noisy lorikeets making the balcony quite unbearable in the afternoon.

I was of course, there for the Histotechnology Group of Queensland's 2012 conference, held on the Labour Day long weekend (which was wise as many of us needed time to recover from our hangovers (more on that later) and both days had great talks by various speakers.

Dr Peter Hopkins began with a talk on lung transplants and the histopathology of lung rejection. Along the way, he took us on a journey of lung disease as it relates to transplants and a general overview of the transplantation process from clinical indications to organ harvesting to monitoring the recipient's reaction to the transplant.

Related to this was a discussion of C4d and its role in antibody-mediated rejection of heart transplants by Dr Andrew Dettrick. Dr Dettrick was studying the use of C4d IHC as an early marker for heart transplant rejection.

This (and other) linking of topics was done well by the HQG and showed the amount of planning which went into the conference. If it was not planned deliberately, then I have no doubt that Dirk Gently's Holistic Detective Agency should be hired to explain the interconnectedness of all things histological.

Another good example of this interconnection was between Naomi McCallum and Joshua Masterton discussing microscopy imaging (an excellent talk which showed that Mr Masterton not only knows the subject but has had plenty of hands-on experience in trouble-shooting unexpected problems) and Diana Jones discussing the new pooled typing methods used by SNP. Typists from all over Queensland would download and transcribe dictations from a central server. From Ms McCallum's description of microscopy imaging and the advancement of the technology, it is only a short leap to applying the pooled typing principle to pathologists whereby pathologists all over the world could download microscopy images and do a virtual diagnosis.

Michael Walsh and Dr Blake O'Brien paired off nicely as they discussed mismatch repairs and hereditary nonpolyposis colorectal cancer. In particular the immunohistochemistry of MLH1, MSH2, MSH6 and PMS2 and their role in diseases such as Muir Torre and Lynch syndrome—both of which arise from germline mutations in a mismatch repair gene.

Stretching the connection a little, Dr Susan Bradford spoke of moving from the traditional clinical or histological tumour classifications (which can be misleading) to molecular techniques being used to identify specific genetic defects (such as mismatch repair genes) and thus give better guidance on treatment.

Molecular diagnostic methods were also the heart of a talk on the recent Hendra virus outbreak by Dr Bruce Corney and Amanda De Jong. They discussed the problems faced by the people working to control the outbreak and the tabloid media journalism which made their lives far more difficult than necessary.

A more-tenuous link could be made between Christopher Schmidt's work on melanoma vaccines and Associate Professor Anthony Woods' discussion on the future of the medical science workforce. The short version: We are *not* about to become obsolete due to a melanoma vaccine and our future looks promising if we can be recognised by the government as professionals in the legal sense of the word. As Damien Harkin pointed out, we are not likely to be regulated as a profession until some serious incident occurs such as a huge confidentiality breach or patients dying *en masse*. Suggestions are welcome.

Damien Harkin himself spoke about the histology of the corneal limbus and the before/after histology of reconstruction of the cornea.

Emma Hughes discussed the SNP protocol for breast sentinel nodes with such clarity and expertise that I was able to transcribe the details of her method and *still* read my writing afterwards (I usually take notes using the André New Era method which can be decoded only by experienced NSA cryptologists).

Ms Hughes talk matched nicely with Emma Raymond's discussion of tissue banking at the Wesley Research Institute

because both speakers are named Emma. Ms Raymond has a beautiful vision of creating a centralised library of tissue types at the Wesley which can be accessed for research purposes. Anyone wanting a particular type of tissue can access the library, find where in Australia it is stored and retrieve the tissue for their work.

The final connected talks were Damien Cass' lecture on disaster victim identification using a case study in Nepal and the humanitarian work done by Associate Professor Brian Miller and Dr Robin Cooke in East Timor. Both lectures highlighted the problems of working in foreign lands with an unfamiliar language and minimal resources. I was impressed with the solutions used by them all to overcome these and other obstacles and also with the audience for not retching at a video of an amputation using a wire saw.

There were also stand-alone topics of interest to histologists in general such as tissue microarray technology in IHC by Anthony Van Zwieter. Anthony discussed the technology and the problems he faced in trying to create a neat section from a single block with up to 1000 different tissue types. He also found a group of easily-sourced tissues to act as an almost universal IHC control. I suggest speaking to him nicely for details as it looks useful for *everyone* doing IHC.

Finally, David Gan (who has an incurable habit of following me into toilets) gave a fun quiz for us all and rewarded people with projectile chocolate every time they said, "Smiley face!" The Ganman was the last speaker on the first day and his light-hearted quiz set the tone for the rest of the afternoon and the dinner that evening. Before, during and after dinner were free drinks...

...and this is where it gets blurry...

I remember going to bed. I also remember waking up on the floor of my room just inside the door. I remember crawling back into bed again and then I remember waking up in the morning with a sprained ankle and lots of bruises. As far as I can tell, I woke up again, went out to party and then fell down the stairs or something. If anyone out there knows what the hell I did, drop me a line care of *Tissue Paper* magazine.

From all this, I conclude that Jägermeister is the drink of daemons (which are similar to demons but

pretentious) and nothing good can come from something which tastes like potpourri fermented in cough syrup.

I blame Jerres for all this. Jerres Alcober was the man responsible for everything that weekend from controlling the AV system to organising the lunches. It has to be said that Jerres deserves every credit for making the weekend go smoothly and coordinating about a dozen different speakers. He is also the one who insisted I drink Jägermeister shots. Jerres is the devil.

Of course QML paid for these drinks on the promise that I take notes for my co-workers. This meant I spent all weekend pretending I was a freelance journalist and asking the delegates stupid questions. I should have brought my camera so I could be a freelance *photojournalist* which is even cooler—especially if I wore cargo pants and combat boots while reporting live from a laboratory warzone...

...this is André (with an A) from *Tissue Paper* magazine reporting live from the histology conference. As you can see behind me, the delegates are in position and waiting to hear from President Reilly. I don't know if you can hear this Aubrey but there is the constant sound of microtomes in the hall not five miles from our position. Authorities are reluctant to let us approach without armed escort.

I'll pan the camera around so you can see my bodyguards, led by Laura Mildenhall, from Envoi Pathology. She assures me that her scalpels *already* have Schwann and Morton blades in them in anticipation of certain violence and we have received rumours from the locals that the insurgent SNP scientists are using cryostats against anyone from Queensland Health. This direct contravention of histological wartime rules of engagement has not gone unnoticed by QML who have filed official protests at the highest levels...

But it must all come to an end now. I have to go to work (on a twisted ankle) and back into the real world...but for one shining moment, I was:

André (with an A) from *Tissue Paper* magazine.





NATIONAL HISTOLOGY CONFERENCE 2013

Program

A detailed program is currently being worked on however in the meantime please see below for a list of speakers and topics thus far, further details regarding the topics will be released early 2013.

Friday 26th April 2013

Dr Guy Orchard /
Mohammed Shams
Dr Thomas Haas

Dr Thomas Haas

Jason Kelly / Alex Laslowski /
Mark Bromley / Rita Au

MOHS Technique (Advanced)

Tissue identification for the Histologist (Basic)

Stalking the big Four: New developments in the diagnosis of breast, prostate, colon and lung carcinomas (Advanced)

Basic Immunohistochemistry Stain Identification: Focus on stain identification & Recognition of some popular antibody markers (Basic)

Saturday 27th April 2013

Keith Byron

Tony Van Galen

Dr Guy Orchard

Anne Prins / Alana Treasure

Mark Koina

Piero Nelva / Dr Beena Kumar

Natalie Kvalheim

Soeun Mom

MyHoa Huynh

Nina Fotinatos

Introduction to Molecular Techniques

Laboratory practices for the diagnosis and management of prostate cancer

IHC Diagnosis of Malignant Melanoma

Interesting Histology

EM diagnosis of infectious agents (Case studies)

Technical aspects related to Breast cancer diagnosis

Abalone virus ISH

Male infertility : Testicular biopsies

GVHD: An Introduction

Career paths/ research opportunities post MLS

Sunday 28th April 2013

Naomi McCallum

Dr Thomas Haas / Heather Renko

Suzanne Svobodova

David Gan

Andrew Griffin

Professor Peter Choong

Greg Jenkins

EM diagnosis : Neuropathology case studies

SLN: A look at the significance from a Histotech's perspective

Companion diagnostic molecular testing for BRAF, KRAS and EGFR

Making the most of your specimen in IHC

NATA: Aspects of the standard in reference to laboratory accreditation

Targeted therapies in sarcoma

Histology disasters



Not only does the National Histology Conference have a strong scientific program, including workshops already confirmed, as well as a number of high-quality, world recognised scientific and medical guest speakers it also have a very exciting social program!



AFL Corporate Hospitality

Would you like to see one of the biggest games of the year outside of the Grand Final? And be treated like a VIP with a two course lunch in the 'Olympic Lounge' with beer, wine, spirits and soft drinks prior to the game, then reserved seating in the Olympic stand to watch the game, with a snack and drink at half time back in the lounge? Then this is the pre touring option for you!

Game: Collingwood Vs Essendon

Location: Melbourne Cricket Ground (MCG)

Date: 25th April 2013

Cost: \$285pp – based on 2012 prices (please be aware that these may increase slightly in 2013)

RSVP date: 31st December 2012

RSVP details: events@infront.com.au or 08 83629844

Shopping Tour

We all know that Melbourne is the shopping capital of Australia; however it can be hard to know where to start – or where to go for the best buys with this tour you will be taken to numerous shops with transport and a 2 course lunch, at Fenix, owned by Gary Mehigan of MasterChef Fame.

Date: 26th April 2013

Cost: \$98.00 per person

RSVP date: 31st January 2013

RSVP Details: events@infront.com.au or 08 83629844

Please be aware that this tour is subject to minimum numbers



Winery Tour

Would you like to kick off your busy Conference week with a winery tour through the Yarra Valley? On this tour you will have the chance to experience a number of wineries including Yering Station, Balcrow Estate, Yering Farm and Domaine Chandon – this tour is fully inclusive of transport and will pick up and drop off to a central location in Melbourne's CBD.

Date: 25th April 2013

Cost: \$110.00 per person

RSVP date: 31st January 2013

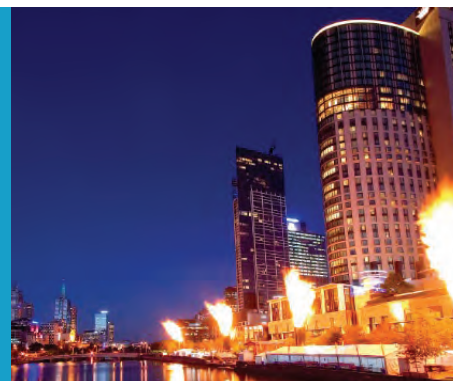
RSVP Details: events@infront.com.au or 08 83629844

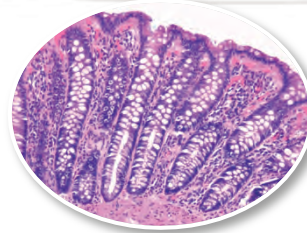
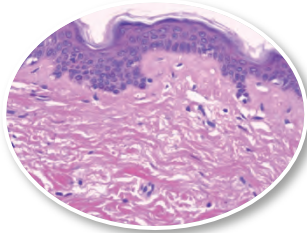
Welcome Function

The welcome function is a great way for delegates to talk to exhibitors and manufacturer in a relaxed and casual environment, there will be nibbles and drinks provided. Tickets are included as a part of your registration fees.
Date: 26th April 2013

Gala Dinner

The Conference Gala Dinner will be held in the River View Room in the Crown Casino, watch the iconic Melbourne flames on the Promenade from the balcony, enjoy a three course meal and some great entertainment with industry fellows.
Date: 27th April 2013





The Effects of Delays in Embedding Tissue after Processing

An investigation by Emma Hughes at the request of Mo Amigh

The experiment was designed as follows:

13 x 4mm punch biopsies were taken from the same piece of Skin attached to a Breast Excision. Each piece was wrapped in End papers and placed onto a machine for processing. Five of these were placed into two separate Peloris 1hr 20min cycle with one being drained after processing and the remaining two placed into a new processing machine we had on trial.

I made the decision to use small punch biopsy because I believed the smaller the specimen the more likely it was to dry out.

Each block was pulled out at the specified time while the remaining blocks were left in the machine until their allotted time. Each block was embedding directly after they were removed from the processing machine.

They were all cut together at 4 microns and stained on a automated H&E Stainer.

The slides were then given to one of our pathologists Dr Kelly McClymont who was unaware of the specific details of each specimen to grade. The results can be seen below.

Specimen	Machine Used	Delay in Embedding	Wax Drained Y/N	Marks out of 5
1	Peloris 1	0	Y	4
2	Peloris 1	30	Y	4
3	Peloris 1	1hr	Y	4
4	Peloris 1	2hrs	Y	4
5	Peloris 1	3hrs	Y	4
6	Peloris 2	0	N	4
7	Peloris 2	30	N	4
8	Peloris 2	1hr	N	4
9	Peloris 2	2hrs	N	4
10	Peloris 2	3hrs	N	4
11	Trial Processor	0	Y	4
12	Trial Processor	3hrs	Y	4

As can be seen from the above data there is no appreciable difference found in the end product as a result in delays in embedding cassettes straight from the processing machines or whether they are kept in hot wax or left to sit.

“Bridging histology laboratories since 1982”



NATIONAL HISTOLOGY CONFERENCE **2013**

Registration Form

26-28 April 2013

Crown Conference Centre, Melbourne



Venue

The National Histology Conference 2013 will be held at the Crown Conference Centre which is located at 8 Whiteman Street, Southbank, Victoria.

Car Parking

Free car parking will be available at Crown Conference Centre should you require this please advise InFront Events Australia, as spaces must be booked in advance to receive complimentary parking.

Registration Payments and Inclusions

All prices are listed in Australian dollars (AUD), and are GST inclusive.

Full package registrations include

- Attendance to all sessions of the conference
- All conference documentation
- Conference satchel
- Catering as per program
- Welcome Reception on Friday 26th of April
- Conference Gala Dinner on Saturday 27th of April
- Does not include attendance to workshops on Friday 26th of April, these must be purchased separately

Conference only registrations include

- Attendance to all sessions of the conference
- All conference documentation
- Conference satchel
- Catering as per program
- Welcome Reception on Friday 26th of April
- Does not include attendance to Conference Gala Dinner, tickets must be purchased separately for this
- Does not include attendance to workshops on Friday 26th of April, these must be purchased separately

Day Registrations Include

- Attendance to all sessions on nominated day
- Conference satchel
- Catering as per program on nominated day
- Does not include attendance to social events, tickets must be purchased separately for this

Conference Fees Do Not Include

- Travel to and from conference venue
- Insurance of any kind
- Hotel and other personal expenses (competitive room rates are available through InFront Events Australia)

Early Bird

Early Bird is available until the 31st of January, full registration fees will be applicable from the 1st of February, 2013.

Welcome Function

The Welcome Function is a great way for delegates to talk to exhibitors and manufacturer's in a relaxed and casual environment, there will be nibbles and drinks provided.

Conference Gala Dinner

The Conference Gala Dinner will be held in the River View Room in the Crown Casino, watch the iconic Melbourne flames on the Promenade from the balcony, enjoy a three course meal and some great entertainment with industry fellows.

Payment Policy

Full payment must accompany the registration form, for your registration to be confirmed.

Cancellation policy

All cancellations must be notified in writing to Conference Managers, InFront Events Australia. Cancellations prior to December 1, 2012 will receive a 50% refund of total registration fees. Refunds for cancellations made after December 1, 2012 will only be made in exceptional circumstances. Accommodation refunds are subject to the terms and conditions of each hotel, please contact InFront Events Australia if you wish to find out more about these terms and conditions.

Liability Disclaimer

In the event of industrial disruption or other unforeseen circumstance, the Conference Organisers accept no responsibility for loss of money incurred by delegates, exhibitors or sponsors.

Further Information

For further information on terms of registration and up to date information on speakers, sponsor and conference program, please refer to the conference website:

www.nationalhistologyconference.com.au

Registration Desk

All exhibitors, delegates and participants will be required to visit the registration desk prior to entering the conference areas and functions, on your first day only. The registration desk will be located in the ground foyer of the Crown Conference Centre on Whiteman Street.

Accommodation

Melbourne ShortStay Apartments – Southbank Deluxe

The Melbourne ShortStay Apartments at Southbank Deluxe have a fully equipped kitchen with a gas cook top and dishwasher. Broadband is available in the room and each room has 26 Foxtel channels. The hotel has a stunning garden terrace with a heated indoor pool, with a gymnasium for those who like to keep fit.

Crown Promenade Hotel

Set in the heart of South Wharf, conveniently located within the building of the conference venue. Each of their modern guest rooms and suites have been innovatively designed, and includes internet access for one device.

Holiday Inn

The Holiday Inn is conveniently located a "stone's throw" away from the trendy Southbank area. Swim a few laps in their heated pool or steam away stress in their sauna.

Travel Lodge

The Hotel is within easy walking distance to great restaurants and cafés (chargeback facilities available with some restaurants in Southbank), impressive shopping, renowned art galleries and the Crown Casino.

Melbourne

Just when you think you've got Melbourne figured out, you'll uncover one more pocket of the CBD with a particular vibe that makes it feel so right to lose another three hours or so.

While fairly compact in size, Melbourne's CBD is split into distinct areas, each with its own fortes and flavours. Bourke Street Mall offers no-strings-attached retail therapy, Chinatown is all dumplings and heritage, Collins Street knows how posh you really are, Flinders quarter squeezes your creative juices, and the sports precinct's fever is contagious. The alleys and laneways, conventional and vertical, make their own rules, and encourage you to break them.

Go on, just look around one more corner, so it might be a good idea to extend your stay!



Personal Details

Title: Dr / Prof / Mr / Mrs / Ms / Miss / Other

First Name

Surname

Position

Organisation

Address

Suburb / City

State

Postcode

Country (If other than Australia)

Email

Mobile

Phone

Fax

Other Requirements (e.g Dietary, Wheelchair access, Hearing Loop, etc)

Will you require onsite car parking at Crown Conference Centre

Yes ☐ No ☐

Number Plate

☐ I authorise Histology Group of Victoria to keep me informed about future events and promotions (Please Tick)

☐ I authorise my contact details to be provided to registered Exhibitors and Sponsors of the Histology Conference 2013 (Please Tick)

☐ I authorise for my name and contact details to be published in the conference brochure (Please Tick)

Registration Details

Registration Type:

☐ Early Bird Delegate – Full Package \$570.00

Available until 31st of January, 2012

☐ Early Bird Delegate – Conference Only \$450.00

Available until 31st of January, 2012

☐ Delegate – Full Package \$720.00

Applicable from 1st of February, 2012

☐ Delegate – Conference Only \$600.00

Applicable from 1st of February, 2012

☐ Student Delegate \$100.00

Day Registration:

☐ Early Bird Saturday Only Registration \$270.00

Available until 31st of January, 2012

☐ Early Bird Sunday Only Registration \$180.00

Available until 31st of January, 2012

☐ Saturday Only Registration \$360.00

Applicable from 1st of February, 2012

☐ Sunday Only Registration \$240.00

Applicable from 1st of February, 2012

☐ Student Day Registration (Please Circle) \$50.00
Saturday Sunday

Friday Workshop:

All Workshops are \$95 each

☐ Workshop 1 – MOHS - Guy Orchard PhD (Advanced)

☐ Workshop 2 – Stalking the Big Four: New developments in the diagnosis of breast, prostate, colon and lung carcinomas -Thomas Haas DO (Advanced)

☐ Workshop 3 – Tissue Identification - Thomas Haas DO (Basic)

☐ Workshop 4 – Immunohistochemistry Stain Identification - Various (Basic)

Social Program:

Welcome Function:

If you have purchased a Full Package or Conference Only registration please indicate by ticking the box below should you wish to attend the Welcome Function, which is included in the registration cost. A non-marked box will be listed as a non-attendee.

☐ Welcome Function

If you have purchased a Day or Student Registration or wish to purchase additional tickets for non-delegates to the Welcome Function please indicate below:

☐ Welcome Function additional tickets _____ \$80.00

Please outline the number of tickets required

Conference Gala Dinner:

If you have purchased a Full Package Registration, the Conference Gala Dinner is included in the registration cost. All other delegates wishing to attend the Conference Gala Dinner or for additional tickets for partners or colleagues please indicate below:

☐ Conference Gala Dinner Tickets _____ \$120.00

Please outline the number tickets required



Accommodation Details

Arrival Date

Departure Date

Length of Stay

Name of Person/s Sharing Room (if applicable)

All locations have been selected as they are all within walking distance to the conference venue

Holiday Inn Melbourne on Flinders

575 Flinders Lane, Melbourne

☐ \$220.00 Standard Room

Room Type	Bedding Configuration	Bathroom	Max people
Standard	1 x Queen Bed	1	2

Crown Promenade Hotel

8 Whiteman Street, Southbank Melbourne

☐ \$250.00 Standard Room

Room Type	Bedding Configuration	Bathroom	Max people
Standard King	1 x King Bed	1	2
Standard Queen	2 x Queen Bed	1	3

Melbourne ShortStay Apartments – Deluxe

63 Whiteman Street, Southbank, Melbourne

☐ \$235.00 Condo Room

☐ \$349.00 Executive Room

☐ \$462.00 Superior Room

Room configuration (please tick)

☐ Queen ☐ Twin

Room Type	Bedding Configuration	Bathroom	Max people
Condo	1 x Queen Bed	1	2
Executive	2 x Queen Bed	2	4
Superior	2 x Queen Beds and 2 x Single Beds	2	6

Travelodge Southbank

9 Riverside Quay, Southbank

☐ \$140.00 Standard Room

Room Type	Bedding Configuration	Bathroom	Max people
Standard	1 x Queen Bed 1 x Double Sofa Bed	1	2

Payment Summary

Registration Sub Total \$

Social Program Sub Total \$

Accommodation Sub Total \$

Total Amount Payable \$

Payment Details

I would like to make payment by (Please Tick)

☐ Cheque Made payable to InFront Events Australia Pty Ltd

☐ E.F.T.

Account Name : In Front Events Australia

BSB: 085-458

Account Number: 823167020

A remittance advice must be provided for your payment to be credited and please ensure you reference payment with your full name

☐ Credit Card (4% Merchant fee applicable)

Card Type Visa / MasterCard

Credit Card Number

Expiry Date

Card Holders Name

Signature

Return and Further Details

Please return this form with payment to:

National Histology Conference 2013 C/- In Front Events Australia

108 Magill Road Norwood, SA, 5067

Phone: (08) 83629844 / Fax: (08) 83624377 / Email: events@infront.com.au

Agreement to Terms and Conditions

I wish to register for the 2013 National Histology Conference and I acknowledge the registration terms and conditions including the cancellation policy

Signature

2nd Scientific Meeting 2012

University of Queensland Integrated Pathology Learning Centre

The 2nd Scientific Meeting for this year was held on the 30th August at the Royal Brisbane and Woman's Hospital. The meeting was hosted by some of the Staff of the Histopathology Department of Queensland Health at RBWH.

Attendees were taken to the University of Queensland's Integrated Pathology Learning centre to tour their wonderful collection of exhibits.

The Centre was relocated to its new home in April of 2010 bringing together the extensive James Vincent Duhig Pathology Museum, including more than 2500 specimens, artefacts from the Marks Hirschfield Medical History Collection, the nursing Museum and the latest electronic teaching resources. Its self-learning facilities include radiological images, computer-based study programs and a large collection of anatomical models, posters, and plastinated and potted specimen exhibits.

The collection has grown over the last 70 years, as long as the University of Queensland has had a medical program. It has played a critical role in the education of U.Q medical students, staff and allied Health workers during this time.

The museum is located in the Health Sciences Building which is in the heart of the RBWH campus.

Their collection of anatomical specimens is divided into sections according to their place in the various human body's systems i.e. skeletal, reproductive, and urological.

The anatomical specimens were very informative and fascinating to look at. It was also fascinating to look at the various



Metastatic Melanoma in the Brain



Fingers/thumbs



Osteosarcomas at various stages



There were also various historical medical devices on show.



Early Anaesthetic Delivery Device



Opthamology Surgery



Early Prosthetic devices

This tour was enjoyed by all. Private group tours can be booked by contacting the museums curator. After the tour, all the attendees were taken on a tour through the Queensland Pathology Department



Dissection Bay



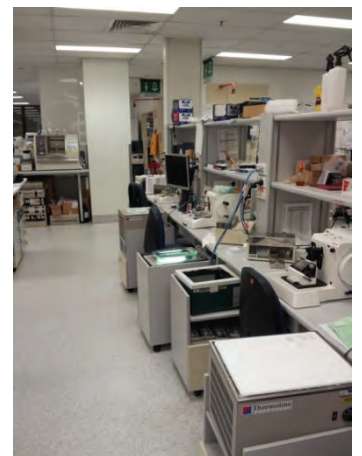
Specimen Storage



Processing Room



Embedding



Microtomy



Special Stains



Immunohistochemistry



Frozen Sections/Immunofluorescence



After the tour we then dined on Pizzas, Soft Drinks and had many interesting and funny conversations amongst ourselves. Thanks to the wonderful staff of the Integrated Pathology Learning Centre and the Staff from the RBWH for a great night.



Membership Application Form

To complete membership online go to: <http://www.hgq.org.au>

Please indicate by ☒:

☐ New Membership ☐ Renewal of Membership ☐ Change of Details

Name: _____

Employer: _____

Mailing Address: (Work Address Preferred)

Email: _____

Phone: _____ Fax: _____

Class of Membership:

☐ Full - \$25 per year

☐ Student (Full-Time Only) - \$10 per year with proof required

For New Members Only: New members must be proposed and seconded by current financial members. Should you not know of any members, the executive committee can purpose and second a new member's application.

Proposed by: _____ Signature: _____

Seconded by: _____ Signature: _____

Applicant's signature: _____ Date: _____

Please return completed form via (options below):

Postal Address: Jerres Alcober
Anatomical Pathology Department,
Pathology Queensland
The Prince Charles Hospital
Level 2 – Clinical Sciences Building
Rode Road, CHERMSIDE, QLD 4032

Email Address: admin@hgq.org.au
Fax number: (07) 3139 4546

Please make all payments via (options below):

Direct Deposit: Acc name: Histotechnology Group of
Queensland Incorporated
BSB: 084009
Acc number: 198048439
Cheque: Make payable to Histotechnology Group of
Queensland Incorporated
<http://www.hgq.org.au> - "Membership" tab
Paypal:
Cash: In person - Stephen Riley/Jerres Alcober



Histotechnology Group of Queensland Annual General Meeting

Friday 7th December 2012

This event will be hosted by **The Prince Charles Hospital Laboratory – Pathology Queensland** at the **Kedron-Wavell Services Club**

The itinerary will include the **Annual General Meeting, 3rd Scientific Meeting, Trivia Night (with Prizes) & Dinner**

Guest Speakers include:

Claire Chupin

"New Cell Marque SOX Antibodies"

Alin Livadaru

"Introduction to the AdvanSci Bio Automated Dissection System from Slide Mounted Tissue and Unitma Tissue Microarray Technology"

Dr. Felicia Goh

"Screening lung tumour tissue for whole genome sequencing"

Current 2012 Financial Members will receive a **complimentary Main Meal and Beverages**

Non-Members can attend for **\$25 (payable on the night)** and will receive **2012 Financial Member Benefits**

Venue: Longtan Room - Kedron-Wavell Services Club – 375 Hamilton Road, Chermside QLD 4032

Time: 6:30pm sharp

RSVP: **Friday 7th December 2012** @ www.hgq.org.au or admin@hgq.org.au

Hosted by:

Pathology Queensland



The Histotechnology Group of Queensland Incorporated | www.hgq.org.au | admin@hgq.org.au